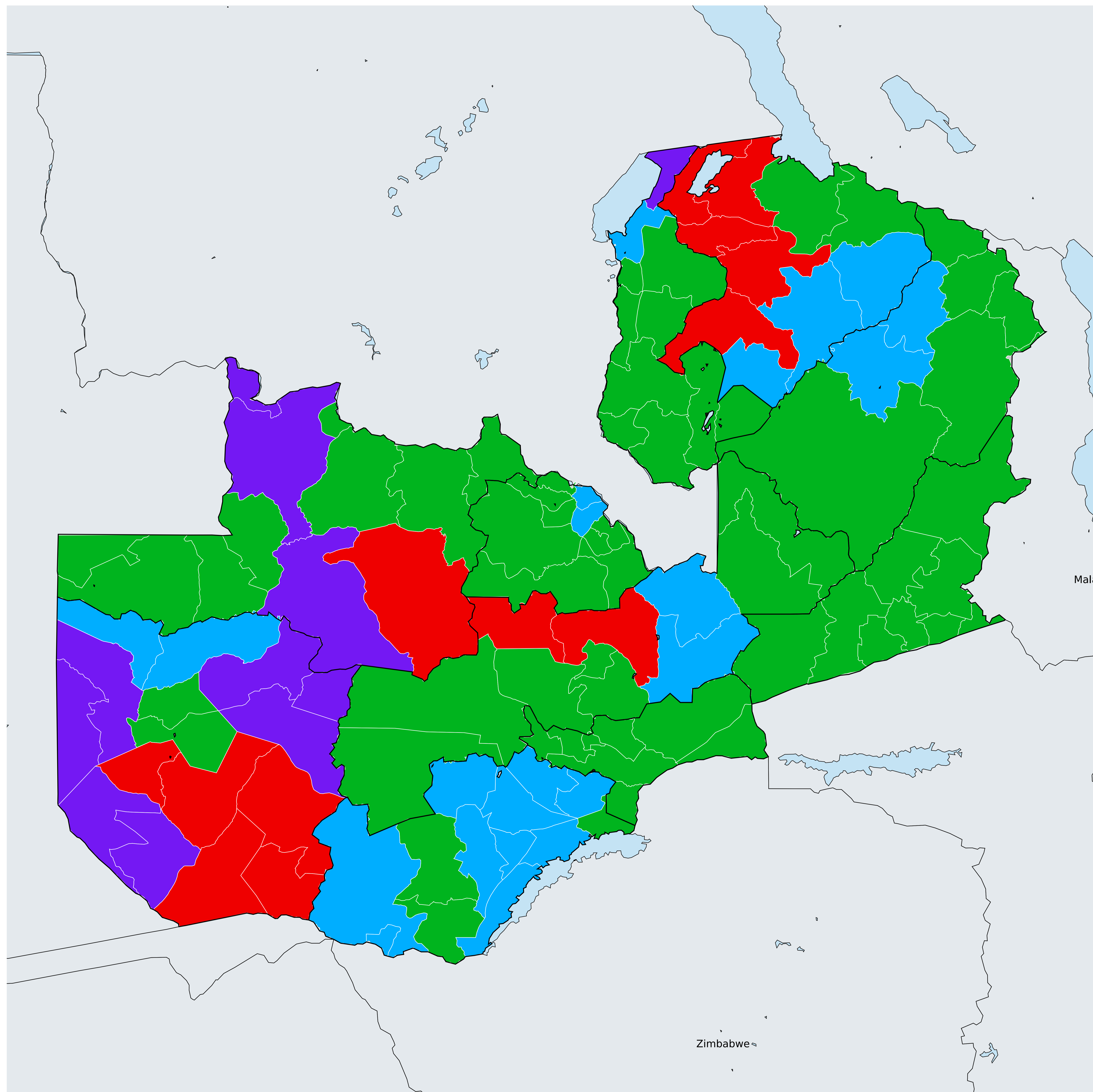


Zambia (2019)

Geographic MDA/PC coverage of Trachoma



Boundaries, names and designations used here do not imply expression of WHO opinion concerning the legal status of any country, territory or area, or of its authorities, or concerning delimitation of frontiers or boundaries. Dotted / dashed lines represent approximate border lines for which there may not yet be full agreement.

Trachoma > MDA/PC coverage > Geographic coverage

