

Ghana (2014)

Geographic coverage - SAC MDA/PC coverage of Soil-transmitted helminthiasis

Soil-transmitted helminthiasis > MDA/PC coverage > Geographic coverage - SAC

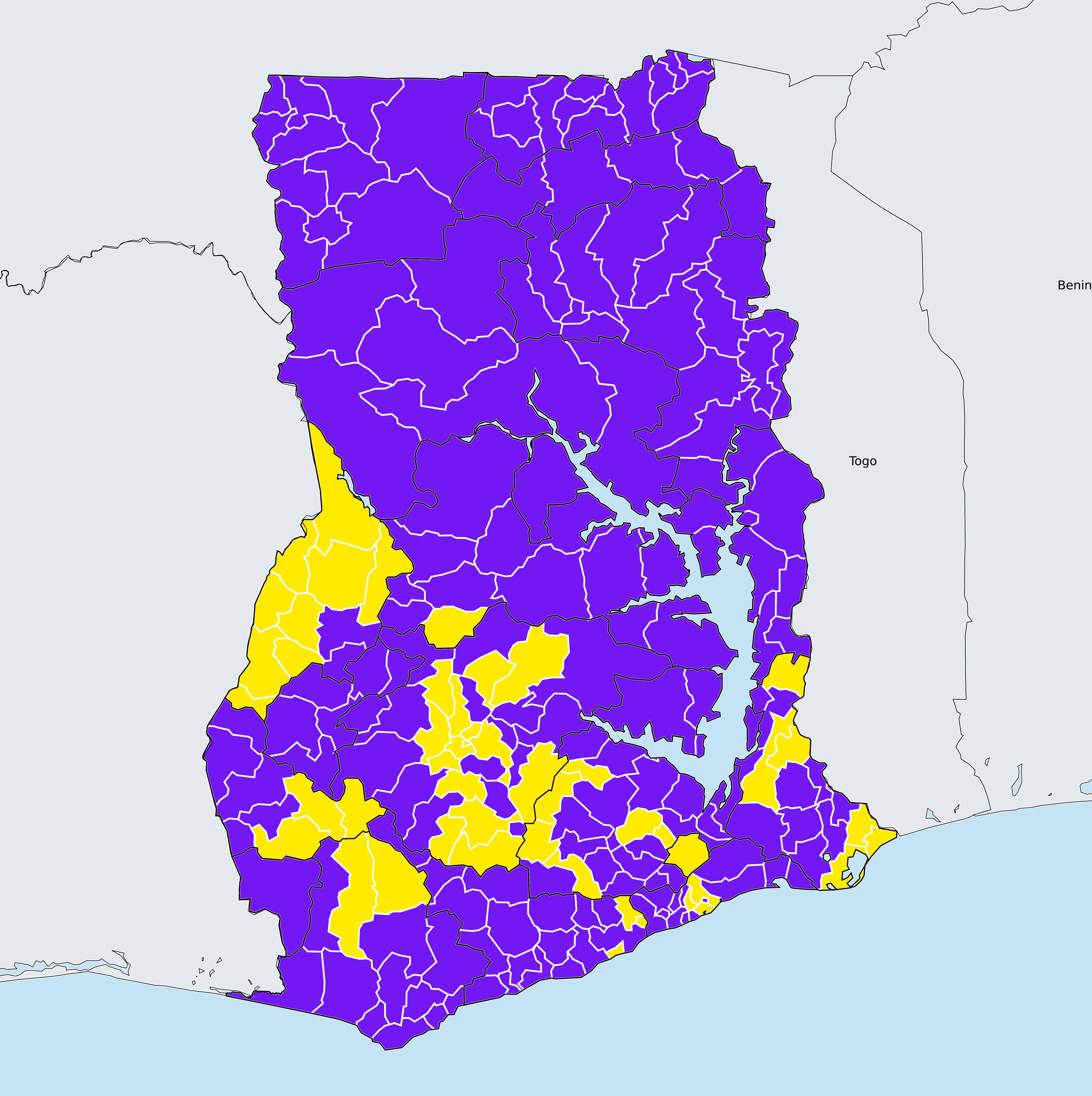
- Endemicity unknown
- PC not required
- PC delivered
- PC not delivered - Moderate endemicity
- PC not delivered - High endemicity
- No data available

Boundaries, names and designations used here do not imply expression of WHO opinion concerning the legal status of any country, territory or area, or of its authorities, or concerning delimitation of frontiers or boundaries. Dotted / dashed lines represent approximate border lines for which there may not yet be full agreement.

Data Source:

Data provided by health ministries to ESPEN through WHO reporting processes. All reasonable precautions have been taken to verify this information

Copyright 2023 WHO. All rights reserved. Generated 18 September 2023



400 KM