

Burkina Faso (2022)

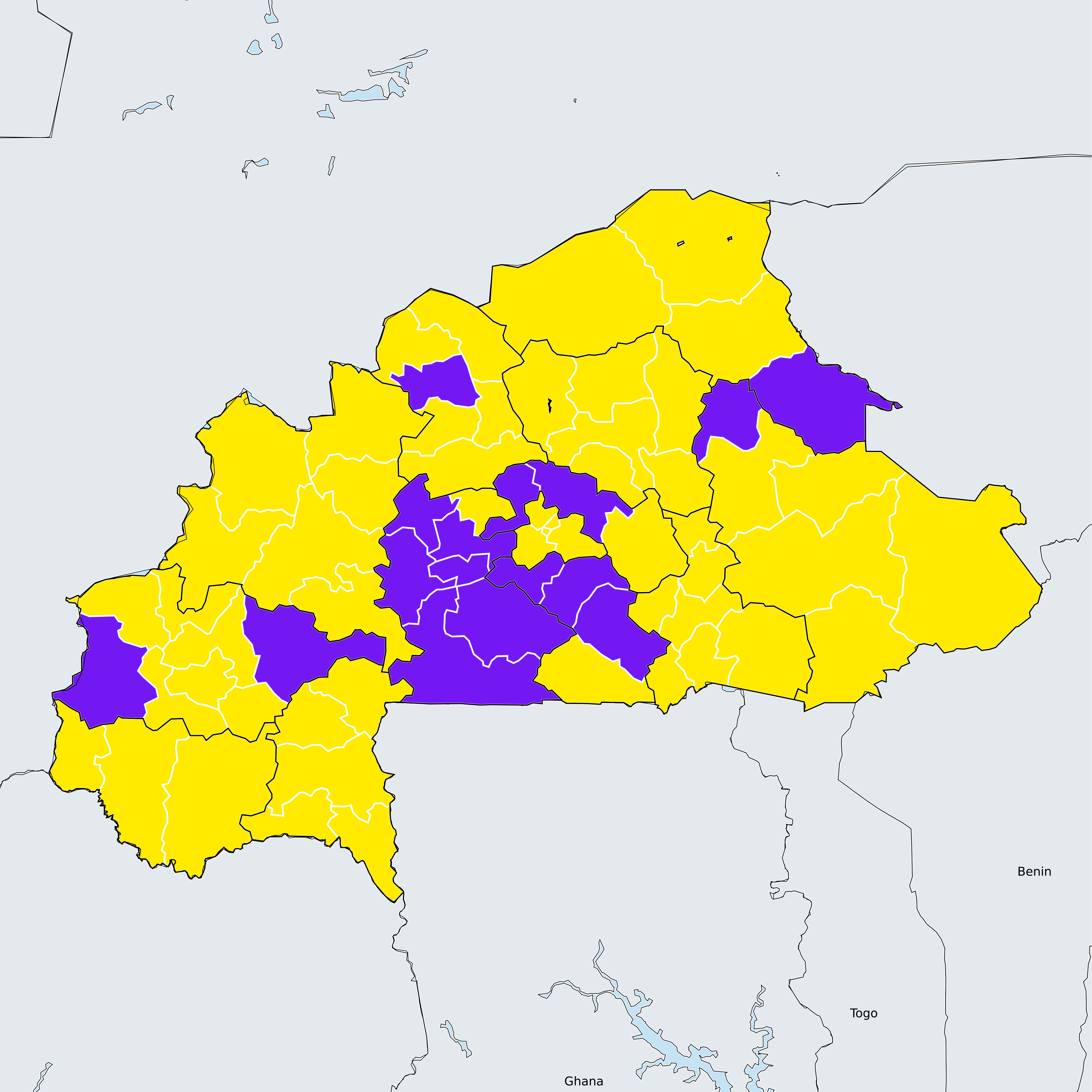
Therapeutic coverage - Total population requiring treatment MDA/PC coverage of Schistosomiasis

Schistosomiasis > MDA/PC coverage > Therapeutic coverage
- Total population requiring treatment

- Endemicity unknown
- PC not required
- Surveillance (prevalence <1%)
- PC not delivered - High endemicity
- PC not delivered - Low/Moderate endemicity
- < 75% coverage
- ≥75% coverage
- No data available

Boundaries, names and designations used here do not imply expression of WHO opinion concerning the legal status of any country, territory or area, or of its authorities, or concerning delimitation of frontiers or boundaries. Dotted / dashed lines represent approximate border lines for which there may not yet be full agreement.

Data Source:
Data provided by health ministries to ESPEN through WHO reporting processes. All reasonable precautions have been taken to verify this information
Copyright 2024 WHO. All rights reserved. Generated 23 January 2024



500 KM